

THE S

FROM THE HOUSE OF THE

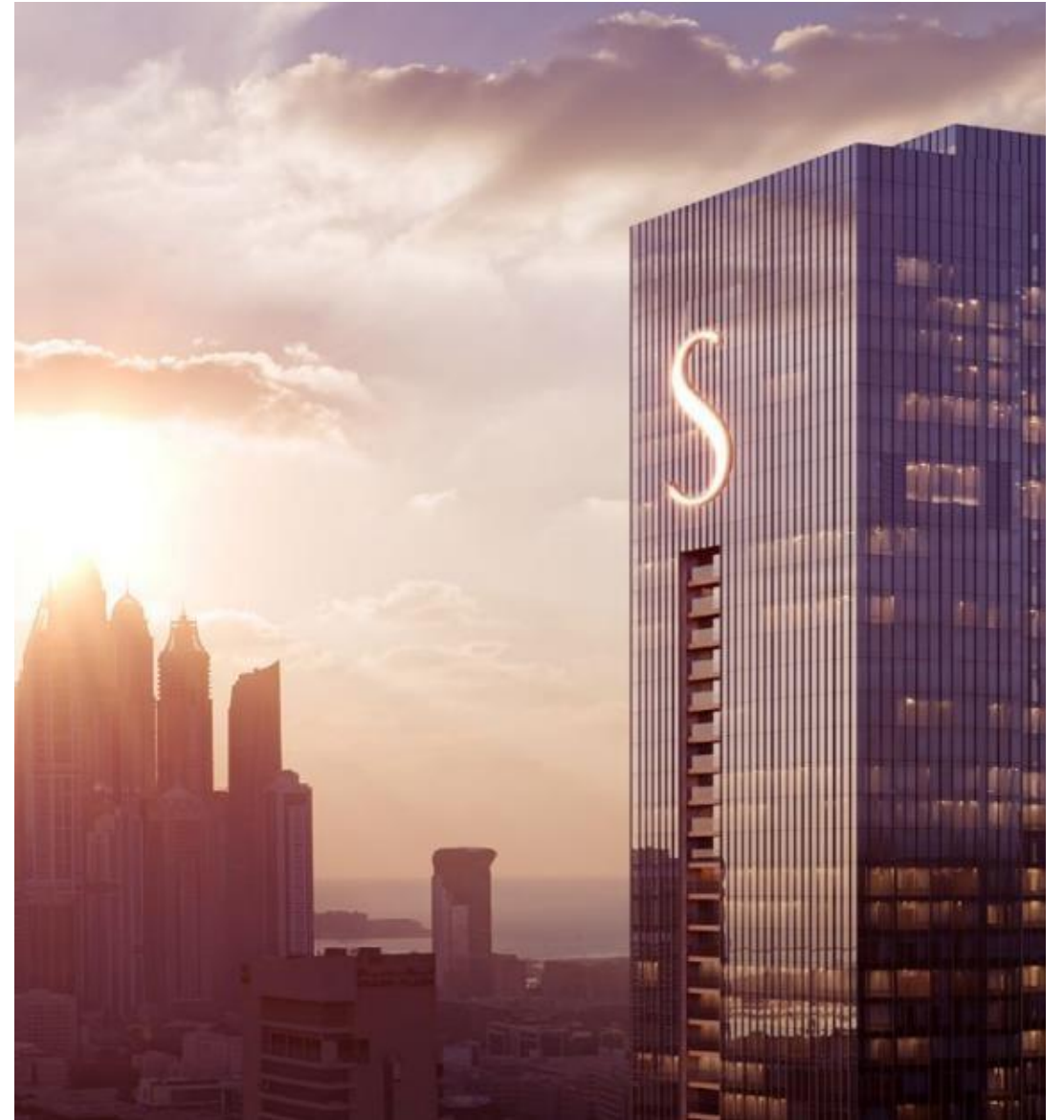
Palace Maker



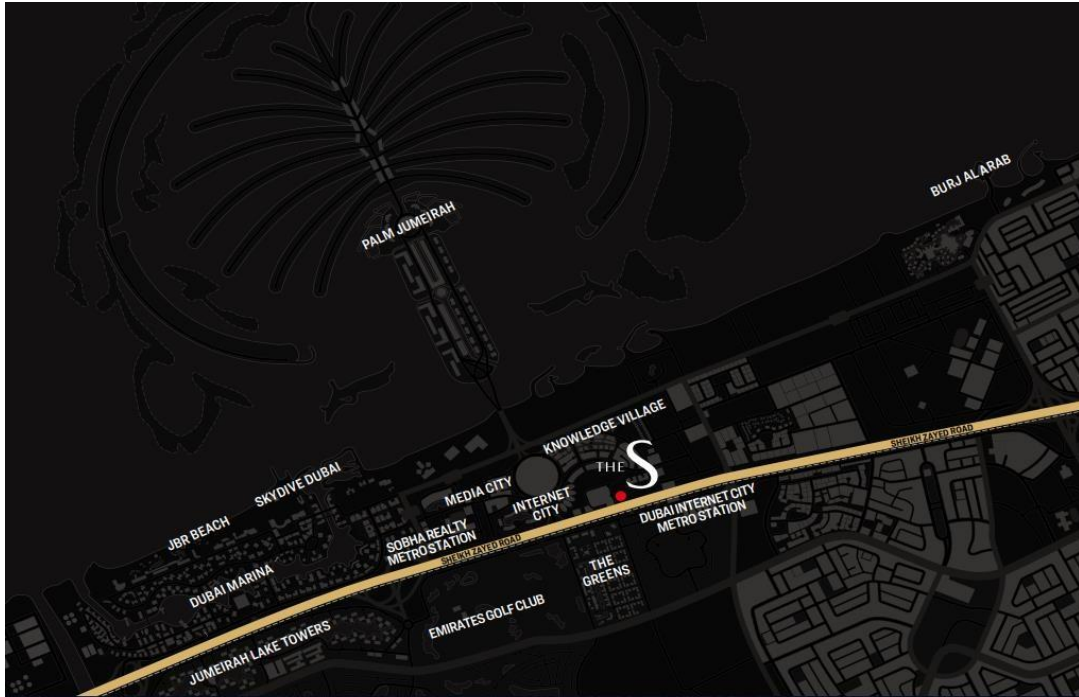
STUNNING VIEWS

Wherever you look

Wherever your eyes wander, they'll rest on glorious sights. The tower has been oriented to allow gorgeous views from all sides. Sweeping sights of the sea can be viewed from the north side, while green vistas of the golf course greet from the south.







A VANTAGE POINT

unlike any other.

DUBAI
MARINA
2
MINUTES

EMIRATES
GOLF COURSE
5
MINUTES

BURJ AL
ARAB
8
MINUTES

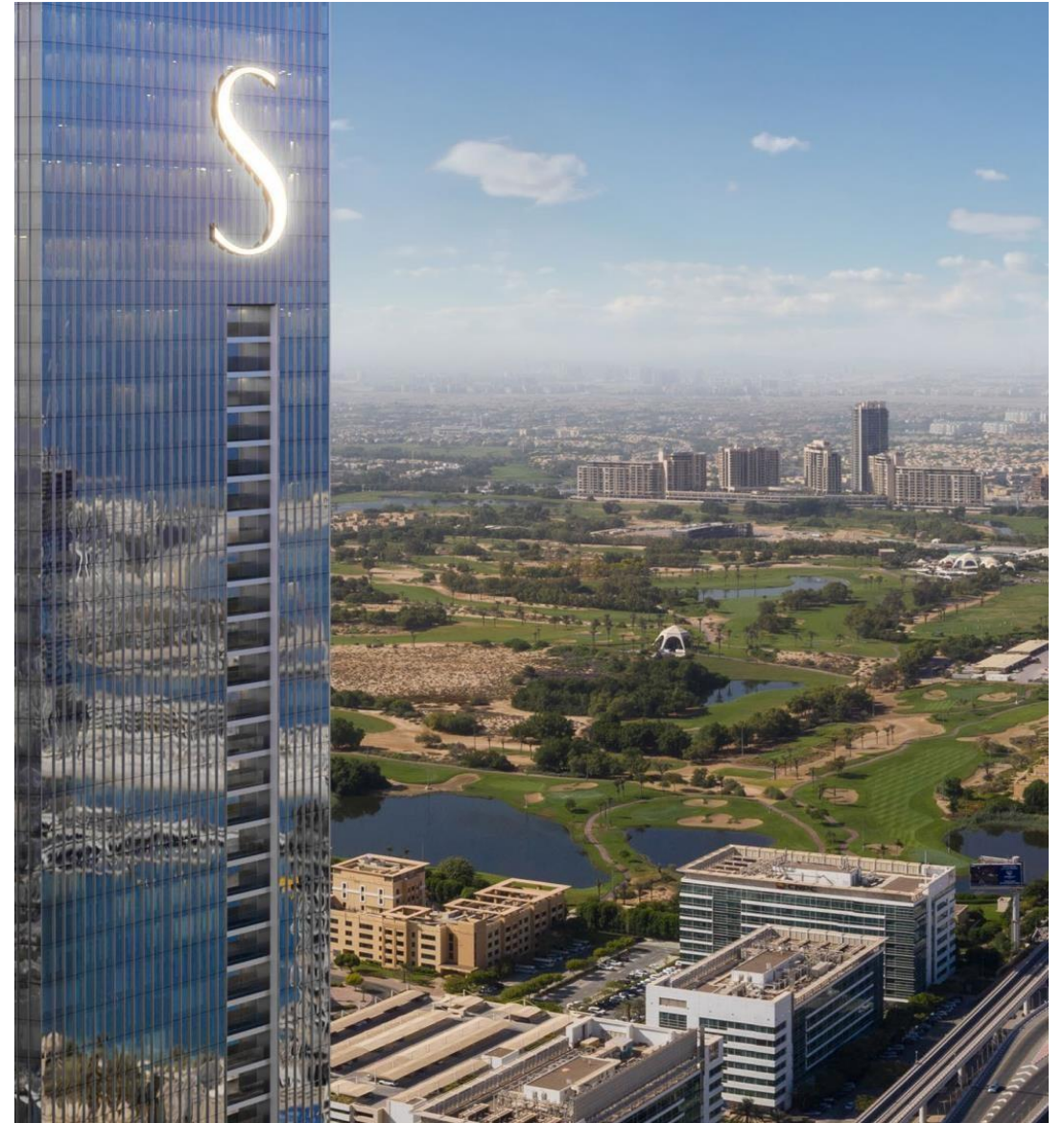
PALM
JUMEIRAH
5
MINUTES

KNOWLEDGE
VILLAGE
3
MINUTES

MALL OF
EMIRATES
10
MINUTES

MEDIA
CITY
6
MINUTES

INTERNET
CITY
2
MINUTES





INDOOR EXPERIENCES

The S Café

Steam and Sauna

Library and Lounge area

Gym

Children's day care centre

OUTDOOR EXPERIENCES

Temperature controlled infinity-edge pool, with a sunken court between the kids pool and main pool

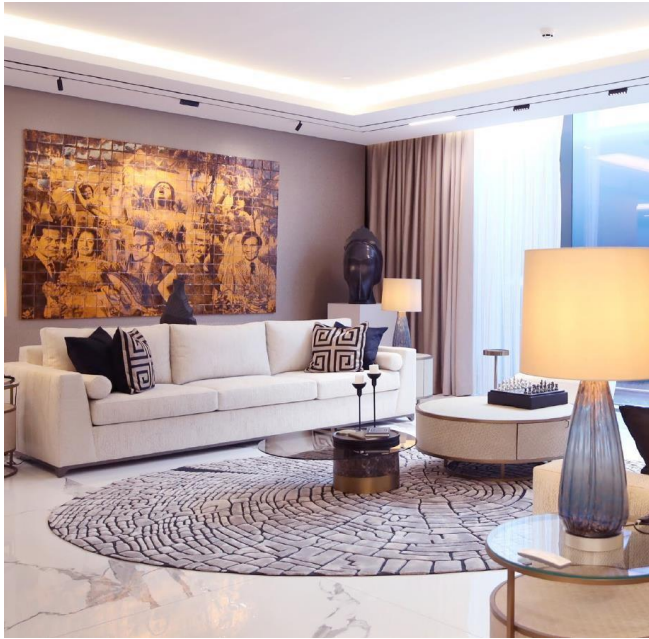
Jacuzzi

Outdoor Cinema

Outdoor Gym

Children's play area

Meditation Corner

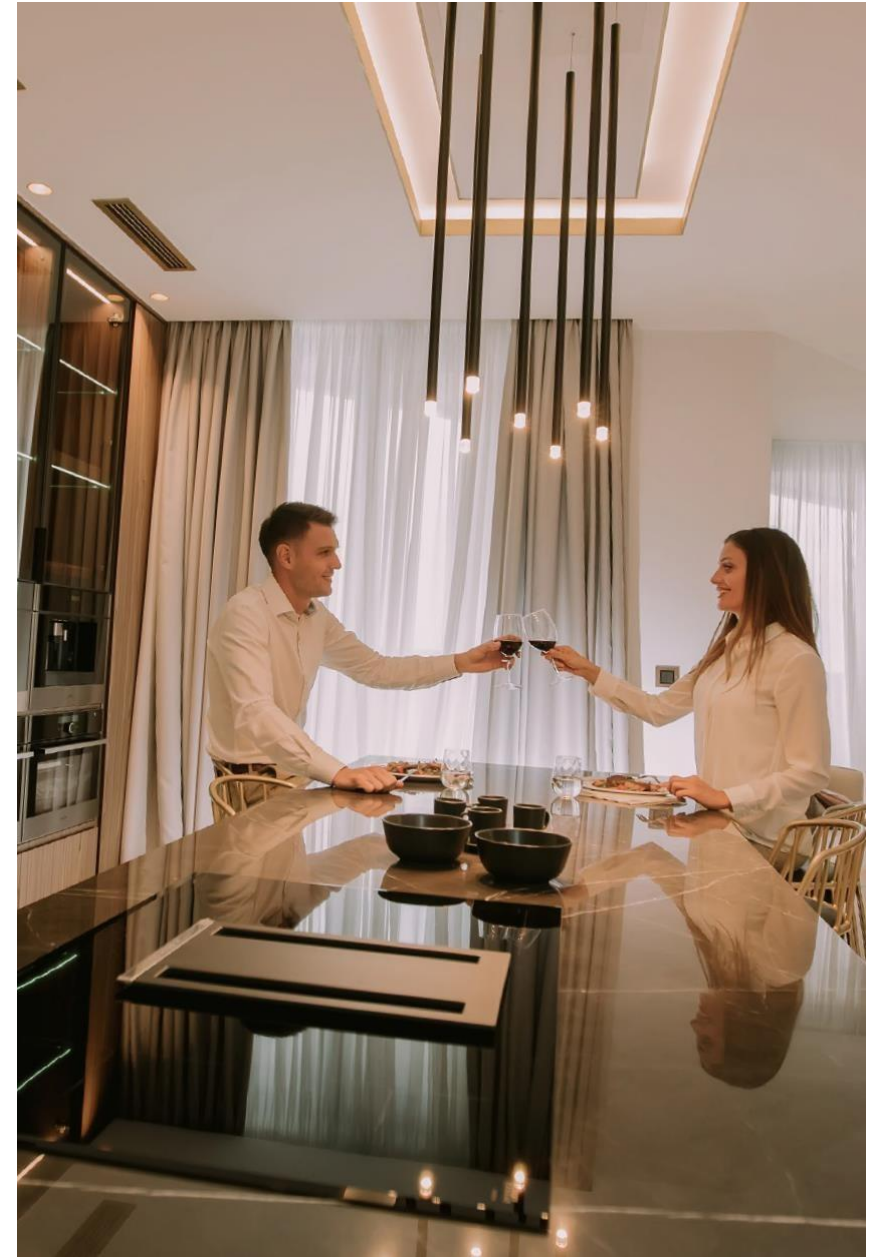


SHEIKH ZAYED ROAD
IS THE MOST POWERFUL
CORRIDOR OF THE MIDDLE EAST.

No wonder you'll feel at home here.



The city's most prized real estate adorns Sheikh Zayed Road, the power corridor of Dubai. Naturally, you belong here. Being so central also has its visual perks, with every apartment at The S oriented to offer stunning views whichever way you look.





SOBHA

REALTY

QUOTATION

The S

SH-422179

Floor Number	24
Type	Type B
Unit Number	S-2402
Saleable Area (Sq.ft)	5,124
Purchase Price (AED)	16,910,091
Pre- Registration Fees (AED)	677,554

Installment Plan

Installment	% of Purchase Price	Amount (AED)	Payment Dates	Milestone
Booking Amount	20.00%	3,382,018.20	On Booking	On Booking date
First Installment	20.00%	3,382,018.20	-	3 Months from booking date
Second Installment	20.00%	3,382,018.20	-	6 Months from booking date
Final Installment	40.00%	6,764,036.40	-	On Completion

Pre-Registration Fees

Description	Amount (AED)
4% Pre-Registration Charges	676,404.00
Knowledge Fee	40.00
Oqood Fees	1,110.00

Developer Details

Developer / ID

966

Bank Details

Name of the Bank

Mashreq Bank, PO Box# 1250, Dubai, UAE

Favouring

SOBHA LLC (THE S TOWER) TRUST

Escrow Account No.

19500000321

IBAN

AE240330000019500000321

Swift Code

BOMLAEAD

4 BED UNIT PLAN

SALEABLE AREA

Suite Area - 4,968.03 SQ. FT.

Balcony - 129.49 SQ. FT.

Total Unit - 5,097.52 SQ. FT.

External Store at Same Level - 53.17 SQ. FT.

Additional Staff Accomodation - 725.00 SQ. FT.

Total Saleable Area - 5,875.69 SQ. FT.

Total Number of Units - 1

